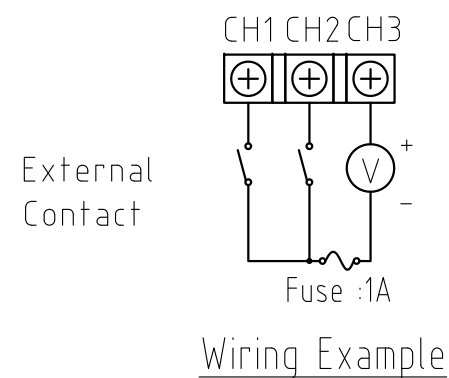
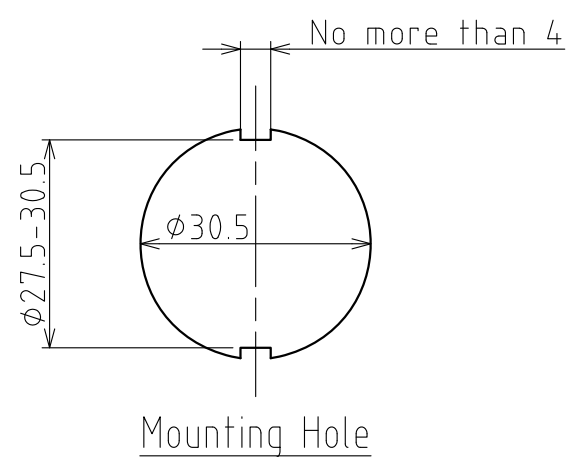
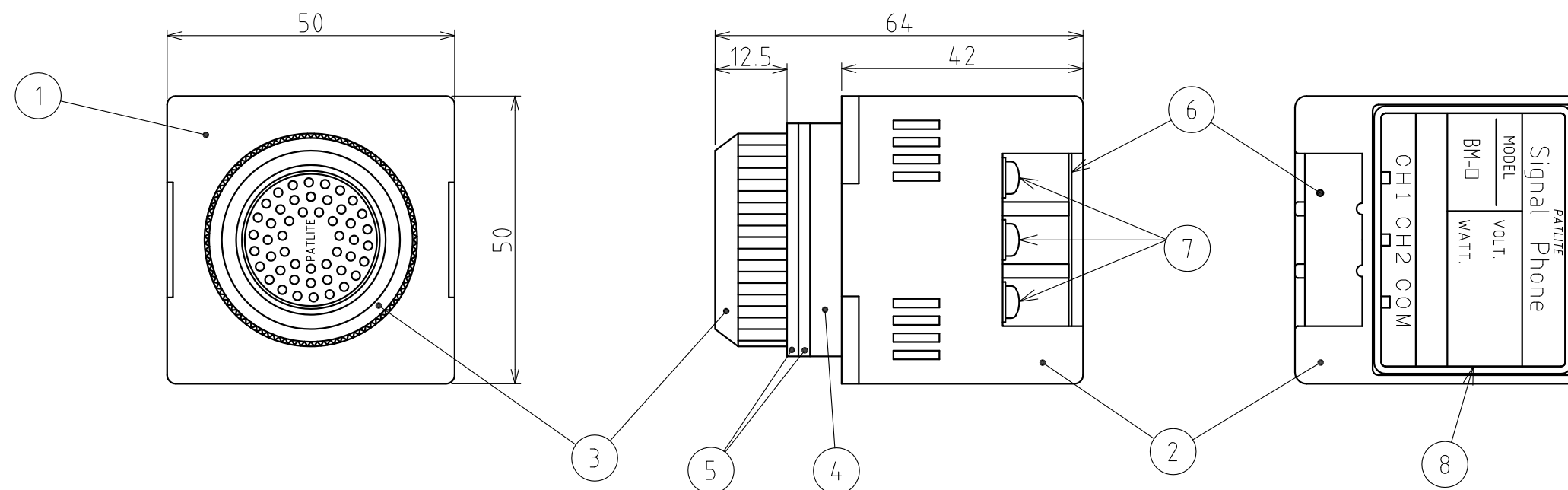


SPECIFICATIONS

[General Specifications]

Model		BM-202	BM-210	BM-220
Rated Voltage		24V AC/DC	100V AC	220V AC
Operating Voltage Range		Rated Voltage ±10%		
Power Consumption		0.4W	2.5W	3.5W
Buzzer	Sound Pressure	80dB	85dB	
	Level	Front direction from the center / at 1m		
	Tone	[Buzzer 1] Slow Intermittent [Buzzer 2] Fast Intermittent		
Operating Ambient Temperature		- 10 °C to + 60 °C		
Operating Ambient Humidity		Less than 85% (No condensation)		
Mounting Location		Indoors		
Mounting Direction		Upright		
Protection Rating		IP30 (IEC 60529)		
Vibration Resistance		19.6m/s² (IEC 60068-2-6 30Hz Fixed frequency)		
Insulation Resistance		More than 1MΩ at 500VDC between the terminals and the chassis		
Withstand Voltage		Applied for 1min between terminals and chassis without breaking insulation		
		500VAC	1500VAC	
Priority		CH1>CH2		
Mass (Tolerance ±10%)		100g		
Outer Dimensions		Refer to the Outer Dimension Drawing		
Conformity Standards		EMC Directive (EN 55011, EN 61000-6-2) RoHS Directive (EN 50581)		
Remarks		Conforms to the CE requirements		
No.BM-202-W18E-1 2				

PATLITE Corporation



8	Nameplate		1		
7	Terminal Screw		3	NBR t2.0 MBNi	
6	Terminal Cover		1	PC(Black)	
5	Rubber Packing B		2	NBR t2.0	
4	Rubber Packing A		1	NBR t3.5	
3	Ring		1	ABS	
2	Body B		1	ABS(Black)	
1	Body A		1	ABS(Black)	
番号 No.	部品名 Part Name	品目コード Part No.	数量 Qty.	材料 & 寸法 & 処理 Material & Size & Finish	記事 Remarks

外観図面 Outer Dimension Drawing
株式会社 パトライト PATLITE Corporation
BM-202-W18E-2_2